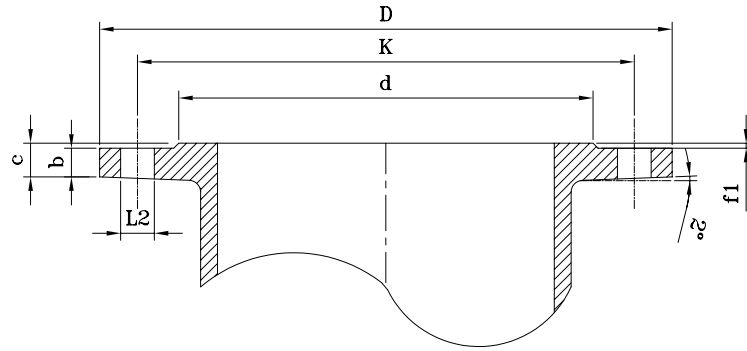


Connection Types

1- Flanged Ends



PN16

DN	D	d	C	b	f1	K	Bolt Holes		Bolt	
							NO	L2	Diameter	Length
65	185	118	19	16	3	145	4	19	M16	65
80	200	132	19	16	3	160	8	19	M16	65
100	220	156	19	16	3	180	8	19	M16	65
125	250	184	19	16	3	210	8	19	M16	70
150	285	211	19	16	3	240	8	23	M20	70
200	340	266	20	17	3	295	12	23	M20	80
250	400	319	22	19	3	355	12	28	M24	85
300	455	370	24.5	20.5	4	410	12	28	M24	85
350	520	429	26.5	22.5	4	470	16	28	M24	85
400	580	480	28	24	4	525	16	31	M27	100
450	640	544	30	26	4	585	20	31	M27	100
500	715	609	31.5	27.5	4	650	20	34	M30	110
600	840	720	36	31	5	770	20	37	M33	120
700	910	794	39.5	34.5	5	840	24	37	M33	130
800	1025	901	43	38	5	950	24	40	M36	140
900	1125	1001	46.5	41.5	5	1050	28	40	M36	140
1000	1255	1112	50	45	5	1170	28	43	M39	160
1100	1355	1215	53.5	48.5	5	1270	32	43	M39	160
1200	1485	1328	57	52	5	1390	32	49	M45	160
1400	1685	1530	60	55	5	1590	36	49	M45	180
1500	1820	1640	62.5	57.5	5	1710	36	56	M52	180
1600	1930	1750	65	60	5	1820	40	56	M52	200
1800	2130	1950	70	65	5	2020	44	56	M52	200
2000	2345	2150	75	70	5	2230	48	62	M56	280
2200	2555	2370	80	74	6	2440	52	62	M56	300
2400	2765	2570	86	80	6	2650	56	62	M56	320
2500	2870	-	86	-	-	2715	60	62	M56	320
2600	2965	2780	91	85	6	2850	60	62	M56	340