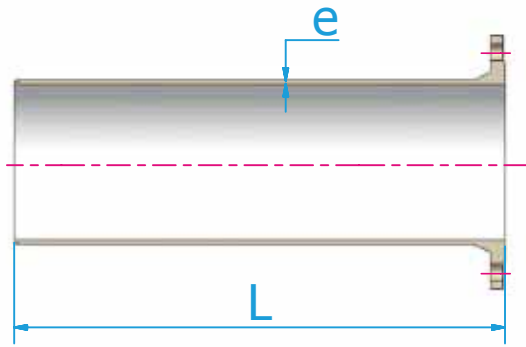


## STRAIGHT SOCKET FITTINGS SPECIFICATIONS



### FLANGED SPIGOT

DN	L	Mass with flange	
		PN 10	PN 16
80	350	7.8	7.8
100	360	9.6	9.6
150	380	15.6	15.6
200	400	22.5	22.5
250	420	32	31.5
300	440	43	42.5
350	460	52	55
400	480	64	70
450	500	77	86
500	520	94	109
600	560	133	159
700	600	179	194
800	600	226	245
900	600	272	295
1000	600	328	369
1100	600	394	430
1200	600	456	520
1400	710	664	732
1500	750	812	900
1600	780	922	1024
1800	850	1196	1322
2000	920	1534	1687
2200	990	1948	2115
2400	1060	2409	2611
2600	1130	2918	3153